

OKLAHOMA DEPARTMENT OF TRANSPORTATION					
FED. ROAD DIST. NO.	STATE	PROJECT NO.	FISCAL YEAR	SHEET NO.	TOTAL SHEETS
1	OKLA.	HSIPG-211F(031)TR	2017	1	6
DESCRIPTION		REVISIONS		DATE	

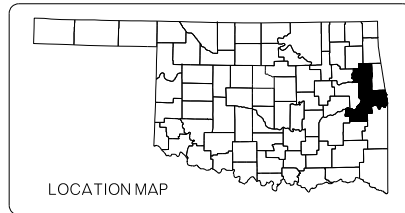
STATE OF OKLAHOMA
DEPARTMENT OF TRANSPORTATION

PLAN OF PROPOSED
STATE HIGHWAY

PROJECT NO. HSIPG-211F(031)TR
SAFETY IMPROVEMENT
SH-9 & SH-82

CHEROKEE, HASKELL & SEQUOYAH
COUNTIES

CONTROL SECTION NO. : 82-11-20, 09-31-08 & 82-68-16
STATE JOB NO. 33293(04)



INDEX OF SHEETS

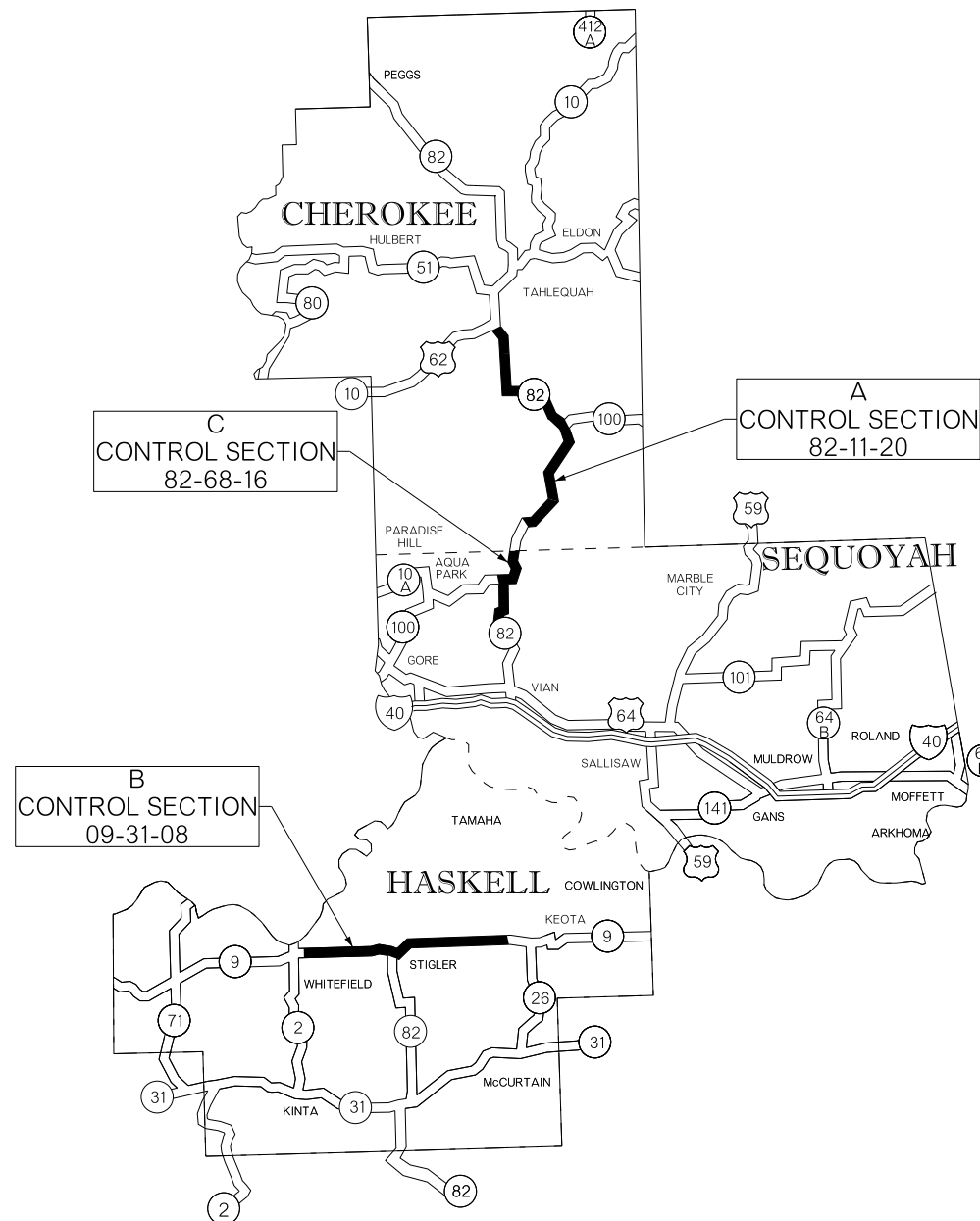
SHEET NUMBER	SHEET DESCRIPTION
0001	TITLE SHEET
AT01	SUMMARY OF PAY QUANTITIES & NOTES
T001	PROJECT LOCATION CHEROKEE COUNTY
T002	PROJECT LOCATION HASKELL COUNTY
T003	PROJECT LOCATION SEQUOYAH COUNTY
T004	TRAFFIC CONTROL DETAIL

STANDARDS TO BE INCLUDED

TRAFFIC

PM3-1-02	TCS7-1-02
RS2-2-00	TCS8-1-00
TCS1-1-01	TCS9-1-01
TCS2-1-00	TCS11-1-01
TCS3-1-01	TCS14-1-00
TCS4-1-01	TCS19-1-01
TCS5-1-00	TCS20-1-00
TCS6-1-02	

OKLAHOMA DEPARTMENT OF TRANSPORTATION
 ENGINEER MANAGER: TAREK A. MAAROUF CHECKED BY: TAREK A. MAAROUF PROJECT ENGINEER: K. DEDERING
 ENGINEER INTERN: G. FADEL SQUAD SUPERVISOR: B. ABRAHAM SQUAD MEMBERS: J. FOX, A. POLACH, I. SHIELDS, C. DIVIS



CONVENTIONAL SYMBOLS

	PROPOSED ROAD
	RAILROADS
	RANGE & TOWNSHIP
	SECTION LINES
	QUARTER SECTION LINES
	FENCES
	GROUND LINE
	EXISTING ROADS
	BASE LINE
	GRADE LINES
	TELEPHONE & TELEGRAPH
	POWER LINES
	BUILDINGS
	OILWELL
	DRAINAGE STRUCTURES - IN PLACE
	DRAINAGE STRUCTURES - NEW
	RIGHT-OF-WAY LINES - EXISTING
	RIGHT-OF-WAY LINES - NEW
	CONTROLLED ACCESS
	RIGHT-OF-WAY FENCE

2009 OKLAHOMA STANDARD SPECIFICATIONS FOR HIGHWAY CONSTRUCTION GOVERN, APPROVED BY THE U.S. DEPARTMENT OF TRANSPORTATION, FEDERAL HIGHWAY ADMINISTRATION, JANUARY 4, 2010.

PREPARED BY:
OKLAHOMA DEPARTMENT OF TRANSPORTATION
TRAFFIC ENGINEERING DIVISION

DATE 08-11-17

OKLA. REG. NO. 25181

OKLAHOMA DEPARTMENT OF TRANSPORTATION	DEPARTMENT OF TRANSPORTATION FEDERAL HIGHWAY ADMINISTRATION
DATE APPROVED _____	DATE APPROVED _____
BY _____ CHIEF ENGINEER	BY _____ DIVISION ADMINISTRATOR
SWO _____	PROJECT NO. HSIPG-211F(031)TR
COUNTY MULTI. COUNTIES	HIGHWAY US-82 & SH-9 SHEET NO. 0001

REVISIONS		
REV. NO.	DESCRIPTION	DATE

TRAFFIC GENERAL CONSTRUCTION NOTES

EXISTING ROADWAY SHALL REMAIN OPEN DURING CONSTRUCTION. THE CONTRACTOR SHALL BE RESPONSIBLE FOR PROPER BARRICADES, LIGHTS, AND SIGNING WITHIN THE LIMITS OF CONSTRUCTION. ALL CONSTRUCTION SIGNING WILL BE IMPLEMENTED ACCORDING TO CONSTRUCTION PLANS. CONSTRUCTION TRAFFIC CONTROL WILL BE INSTALLED IN A MANNER APPROVED BY THE ENGINEER, IN ACCORDANCE WITH CHAPTER VI OF THE MANUAL ON UNIFORM TRAFFIC CONTROL DEVICES, (CURRENT EDITION), AND COMPLIANT WITH APPLICABLE O.D.O.T. STANDARD DRAWINGS.

THIS PROJECT SHALL BE CONSTRUCTED WITHOUT CLOSING TRAFFIC ON CROSS STREETS. A MINIMUM OF ONE LANE IN EACH DIRECTION SHALL BE MAINTAINED AT ALL TIMES.

THE CONTRACTOR SHALL PROVIDE A PERSON TO BE ON 24 HOUR CALL AS NEEDED AS DETERMINED BY THE ENGINEER. THIS PERSON SHALL HOLD A CURRENT CERTIFICATION FROM THE AMERICAN TRAFFIC SAFETY SERVICE ASSOCIATION (ATSSA) OR THE OKLAHOMA TRAFFIC ENGINEERING ASSOCIATION (OETA) AS A TRAFFIC CONTROL TECHNICIAN OR TRAFFIC CONTROL SUPERVISOR.

ALL TEMPORARY TRAFFIC CONTROL DEVICES SHALL MEET ODOT'S "QUALITY STANDARDS FOR TEMPORARY TRAFFIC CONTROL DEVICES." CHANNELIZING DEVICES SHALL HAVE A MINIMUM HEIGHT OF 36 INCHES. THE CONTRACTOR SHALL BE RESPONSIBLE FOR THE MAINTENANCE OF THE TEMPORARY TRAFFIC CONTROL DEVICES, AND SHALL BE RESPONSIBLE FOR REPAIRING OR REPLACING ANY DEVICES DURING CONSTRUCTION.

SPECIAL PAY QANTITY NOTES

- (SP-1) INCLUDED WITH THIS PAY ITEM IS THE INSTALLATION OF ANY TEMPORARY PAVEMENT MARKING WHEN REQUIRED AFTER STRIPE REMOVAL. SEE BOX NOTE ON THIS SHEET.
- (SP-2) DISPOSE OF REMOVED MATERIALS IN ACCORDANCE WITH SUBSECTION 104.09, "REMOVAL AND DISPOSAL OF SALVAGED MATERIALS, STRUCTURES, AND OBSTRUCTIONS." COST OF DISPOSAL TO BE INCLUDED IN THIS PAY ITEM.
- (SP-3) THIS IS AN ESTIMATED QUANTITY TO BE USED FOR THE CENTER LINE AND IT IS BASED ON DOUBLE YELLOW SOLID. THE CONTRACTOR SHALL COOPERATE WITH THE ENGINEER TO DETERMINE THE PASSING ZONE AREAS ALONG THE PROJECT.

THE CONTRACTOR SHALL NOT START STRIPING UNTIL THE PASSING ZONE AREAS HAVE BEEN DETERMINED AND ARE DEEMED ACCEPTABLE BY THE ENGINEER.

SIGNING & STRIPING QANTITY NOTES

- (TS-24) QUANTITY SHOWN INCLUDES 0L.F. TRAFFIC STRIPE(MULTI-POLYMER)(WHITE) AND 342,420 L.F. TRAFFIC STRIPE(MULTI-POLYMER)(YELLOW) AND WILL BE MEASURED BY THE LINEAR FOOT OF FOUR INCH (4") WIDE TRAFFIC STRIPE.

TRAFFIC PAY QANTITY NOTES

- (TC-13) A PART, OR ALL, OF THIS ITEM IS INTENDED FOR REPLACEMENT OF REMOVED EXISTING CONFLICTING STRIPING.
- (TC-14) SEE STANDARD DRAWING PM1-1, PM2-1, PM3-1, PM4-1, PM5-1, PM6-1, PM7-1, PM8-1 (LATEST REVISION). A PART, OR ALL, OF THE QUANTITY SHOWN IS TO BE USED AS FINAL PAVEMENT MARKING.
- (TC-22) AMOUNT SHOWN IS AN APPROXIMATION AND THE ACTUAL AMOUNT OF REMOVAL, IF NECESSARY, SHALL BE DETERMINED BY THE ENGINEER. PRICE BID FOR PAVEMENT MARKING REMOVAL SHALL INCLUDE THE COST OF REMOVING STRIPE, ARROWS, WORDS AND SYMBOLS, AS SHOWN IN THE PLANS. THESE ITEMS MAY CONSIST OF PLASTIC, PAINT OR NON-REMOVABLE MARKING TAPE.
- (TC-70) THIS ITEM IS AN ESTIMATED QUANTITY TO BE USED AS DEEMED NECESSARY BY THE ENGINEER.
- (TC-75) TEMPORARY PAVEMENT MARKINGS SHALL BE IN PLACE THE SAME DAY THAT EXISTING PAVEMENT MARKINGS ARE REMOVED FROM ANY ROADWAY OPEN TO TRAFFIC. ALSO, ALL TEMPORARY PAVEMENT MARKINGS SHALL BE REMOVED PRIOR TO THE INSTALLATION OF FINAL STRIPING.

PAY QUANTITY SCHEDULE

0301 TRAFFIC SIGNING & STRIPING

PAY ITEM	CODE NO.		UNIT	QUANTITY
413(A)	4870	RUMBLE STRIP-CENTERLINE HMA-CON (SP-2)	LF	171,210.00
856(A)	8530	TRAFFIC STRIPE(MULTI-POLYMER)(4" WIDE) (SP-3)(TC-13,14)(TS-24)	LF	342,420.00
857(F)	8006	PAVEMENT MARKING REMOVAL(TRAFFIC STRIPE) (SP-1)(TC-22,70,75)	LF	342,420.00

IF UNABLE TO INSTALL PERMANENT PAVEMENT MARKINGS IMMEDIATELY AFTER EXISTING PAVEMENT MARKINGS ARE REMOVED OR INSTALLATION OF PERMANENT PAVEMENT MARKINGS IS REQUIRED IN A LOCATION WHERE PRIOR REMOVAL IS NOT NECESSARY; TEMPORARY PAVEMENT MARKINGS THAT CONFORM WITH ODOT STANDARDS AND SPECIFICATIONS SHALL BE INSTALLED AND MAINTAINED FOR A PERIOD NOT TO EXCEED 48 HOURS, AT WHICH TIME NEW PERMANENT PAVEMENT MARKINGS SHALL BE INSTALLED. IF INCLEMENT WEATHER OR OTHER CONDITIONS PROHIBIT THE INSTALLATION OF NEW PAVEMENT MARKINGS WITHIN A TIMELY MANNER, NO PAVEMENT MARKINGS SHOULD BE REMOVED.

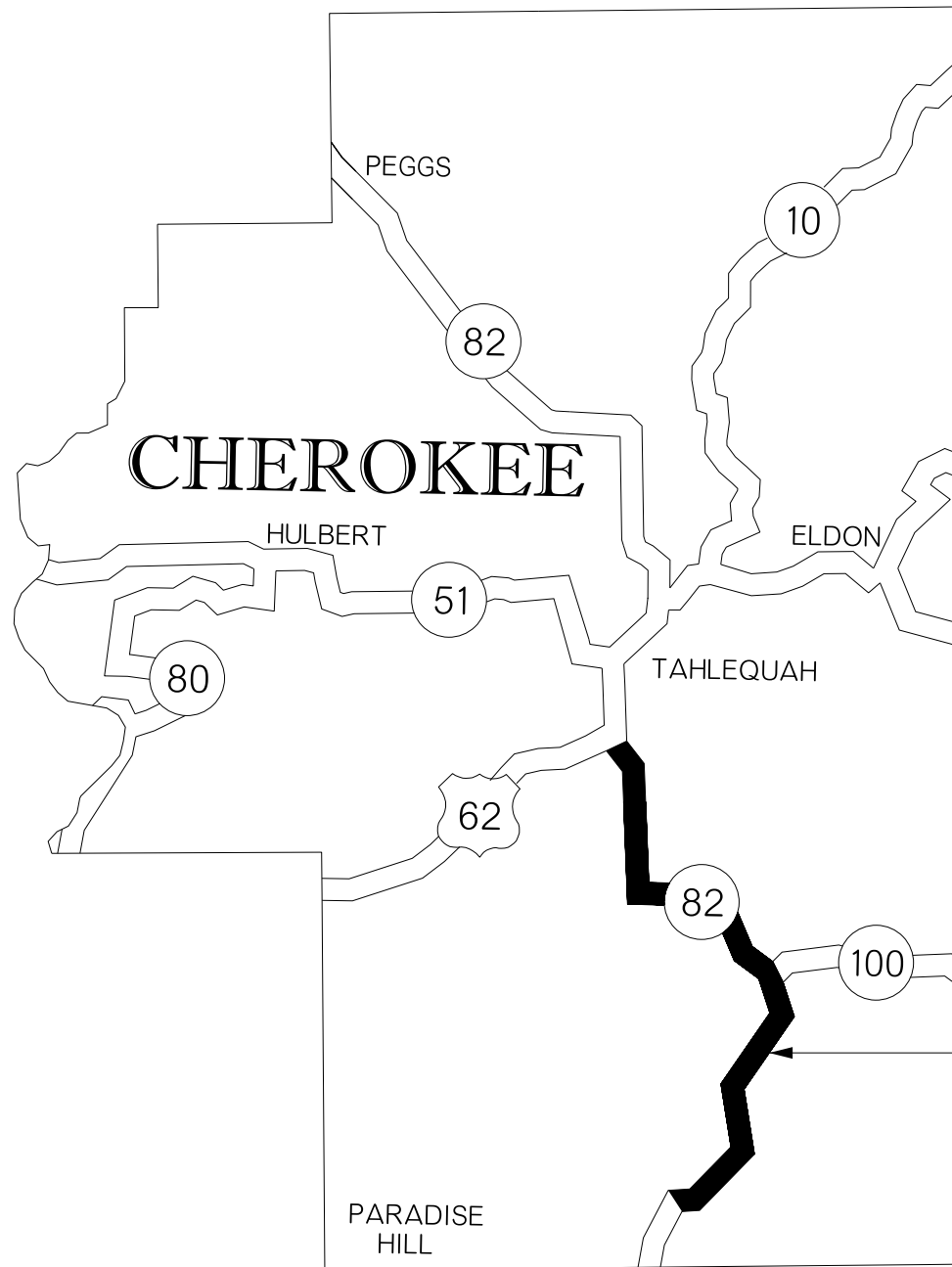
*JP# 33293(04), 33294(04), 33295(04)

ARE MANDATORY TIED PROJECTS CONTRACTOR SHALL COORDINATE TRAFFIC CONTROL PRIOR TO CONSTRUCTION AND AS DEEMED NECESSARY BY THE ENGINEER.

MOBLILIZATION AND TRAFFIC CONTROL PAY QUNANTITIES FOR THIS PROJECT IS CARRIED ON MANDATORY TIED JP33294(04).

DIVISION 1		MULTIPLE COUNTIES		DETAIL:	TMS	7/17
SUMMARY OF PAY QUANTITIES & NOTES				CHECK:	GF	7/17
				ENGINEER:	KCD	7/17
STATE OF OKLAHOMA				GROUP:	ABRAHAM	
				EM:	MAAROUF	
DEPARTMENT OF TRANSPORTATION		JOB/PIECE NO.	33293(04)	SHEET NO.		AT01

REVISIONS		
REV. NO.	DESCRIPTION	DATE



A
CONTROL SECTION
82-11-20

CONTROL SECTION: 82-11-20		
301 TRAFFIC STRIPING		
DESCRIPTION	UNIT	QUANTITY
RUMBLE STRIP-CENTERLINE HMA-CON	LF	70,810.00
TRAFFIC STRIPE (MULTI-POLYMER)(4" WIDE)	LF	141,620.00
PAVEMENT MARKING REMOVAL (TRAFFIC STRIPE)	LF	141,620.00

PROJECT DESCRIPTION
LOCATION: A

SH-82: BEGINNING APPROXIMATELY 6.66 MILES NORTH OF THE SEQUOYAH COUNTY LINE, EXTENDING NORTH APPROXIMATELY 13.41 MILES TO THE CITY OF TAHLEQUAH, IN CHEROKEE COUNTY.

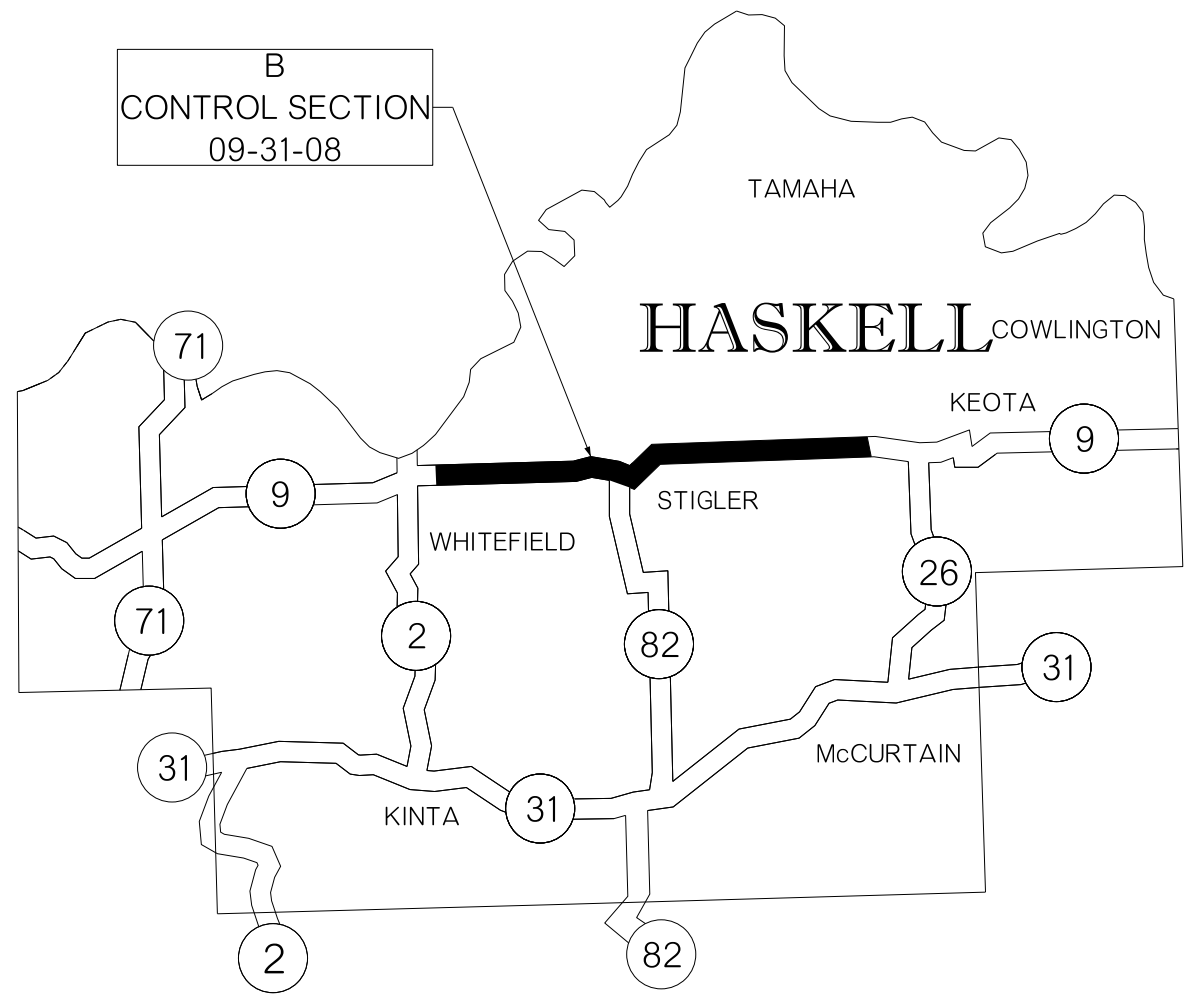
TOTAL LENGTH: 13.41

KEY:
A: ██████████

NOT TO SCALE

DIVISION 1 SH-82	CHEROKEE COUNTY	DETAIL:	TMS	7/17
PROJECT LOCATION CHEROKEE COUNTY		CHECK:	GF	7/17
		ENGINEER:	KCD	7/17
STATE OF OKLAHOMA		GROUP:	ABRAHAM	
DEPARTMENT OF TRANSPORTATION		EM:	MAAROUF	
JOB/PIECE NO. 33293(04)	SHEET NO. T001			

REVISIONS		
REV. NO.	DESCRIPTION	DATE



CONTROL SECTION: 09-31-08		
301 TRAFFIC STRIPING		
DESCRIPTION	UNIT	QUANTITY
RUMBLE STRIP-CENTERLINE HMA-CON	LF	74,200.00
TRAFFIC STRIPE (MULTI-POLYMER)(4" WIDE)	LF	148,400.00
PAVEMENT MARKING REMOVAL (TRAFFIC STRIPE)	LF	148,400.00

PROJECT DESCRIPTION
LOCATION: B

SH-9: BEGINNING APPROXIMATELY 0.68 MILE EAST OF THE JUNCTION OF SH-2 AND SH-9, IN THE TOWN OF WHITEFIELD EXTENDING EAST APPROXIMATELY 14.05 MILES, IN HASKELL COUNTY.

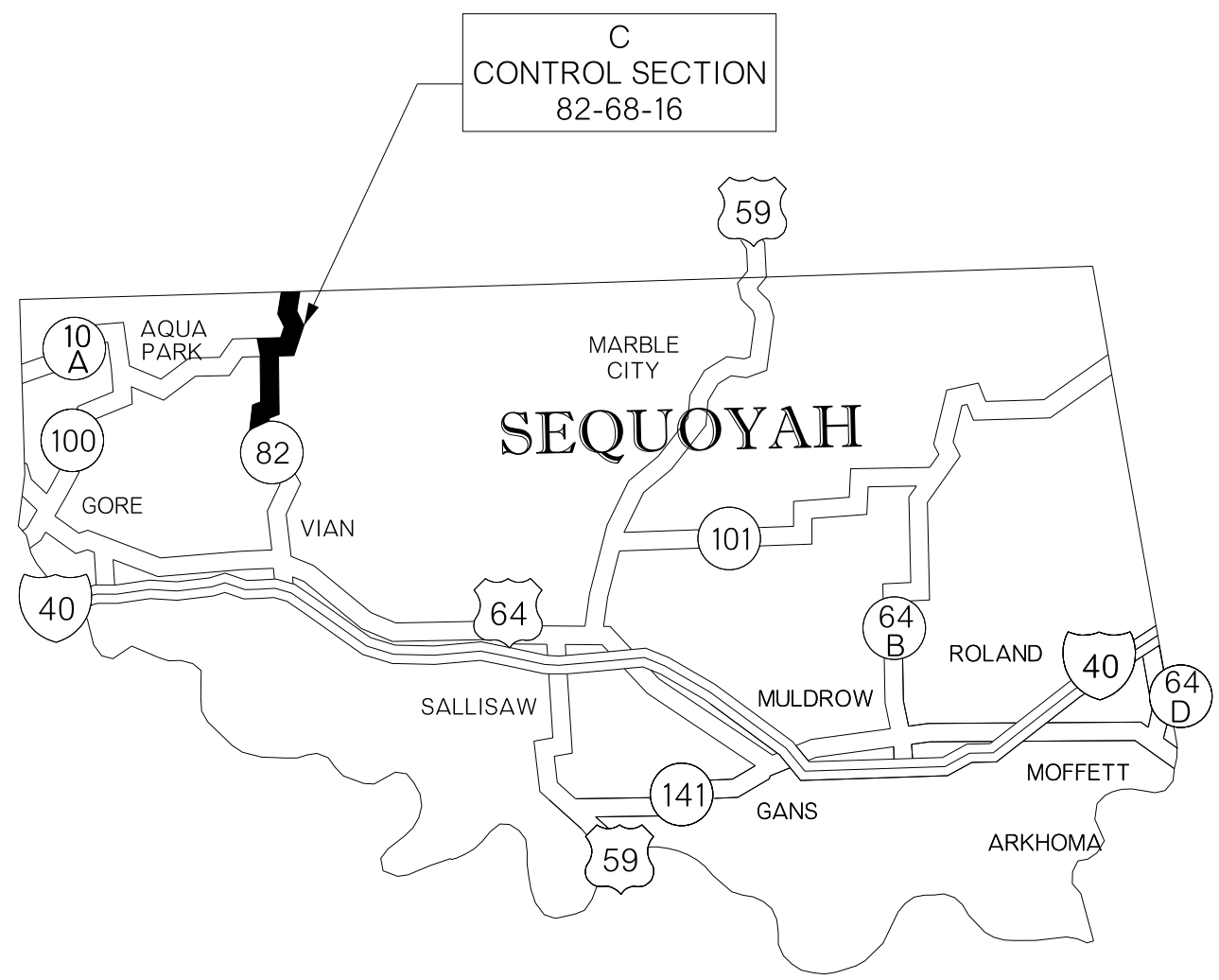
TOTAL LENGTH: 14.05 MILES

KEY:
B: ██████████

NOT TO SCALE

DIVISION 1 SH-9	HASKELL COUNTY	DETAIL:	TMS	7/17
PROJECT LOCATION HASKELL COUNTY		CHECK:	GF	7/17
		ENGINEER:	KCD	7/17
STATE OF OKLAHOMA		DEPARTMENT OF TRANSPORTATION		
JOB/PIECE NO. 33293(04)		GROUP: ABRAHAM EM: MAAROUF		SHEET NO. T002

REVISIONS		
REV. NO.	DESCRIPTION	DATE



CONTROL SECTION: 82-68-16		
301 TRAFFIC STRIPING		
DESCRIPTION	UNIT	QUANTITY
RUMBLE STRIP-CENTERLINE HMA-CON	LF	26,200.00
TRAFFIC STRIPE (MULTI-POLYMER)(4" WIDE)	LF	52,400.00
PAVEMENT MARKING REMOVAL (TRAFFIC STRIPE)	LF	52,400.00

PROJECT DESCRIPTION
LOCATION: C

SH-82: BEGINNING APPROXIMATELY 6.39 MILES NORTH OF JUNCTION OF US-64 AND SH-82, IN THE TOWN OF VIAN, EXTENDING NORTH APPROXIMATELY 4.96 MILES TO THE CHEROKEE COUNTY LINE, IN SEQUOYAH COUNTY

TOTAL LENGTH- 4.96 MILES

KEY:
C: ██████████

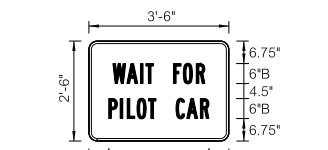
NOT TO SCALE

DIVISION 1 SH-82	SEQUOYAH COUNTY	DETAIL:	TMS	7/17
PROJECT LOCATION SEQUOYAH COUNTY		CHECK:	GF	7/17
		ENGINEER:	KCD	7/17
STATE OF OKLAHOMA		DEPARTMENT OF TRANSPORTATION	JOB/PIECE NO. 33293(04)	
			SHEET NO. T003	

REVISIONS		
REV. NO.	DESCRIPTION	DATE



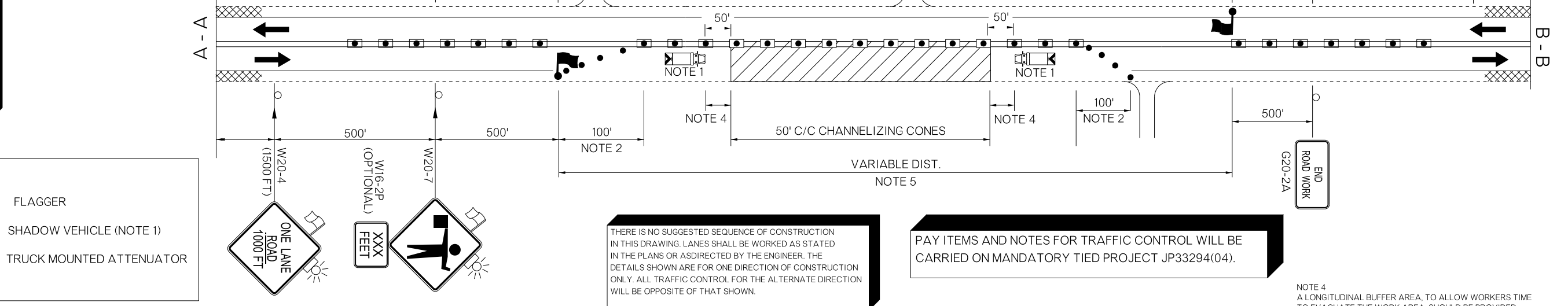
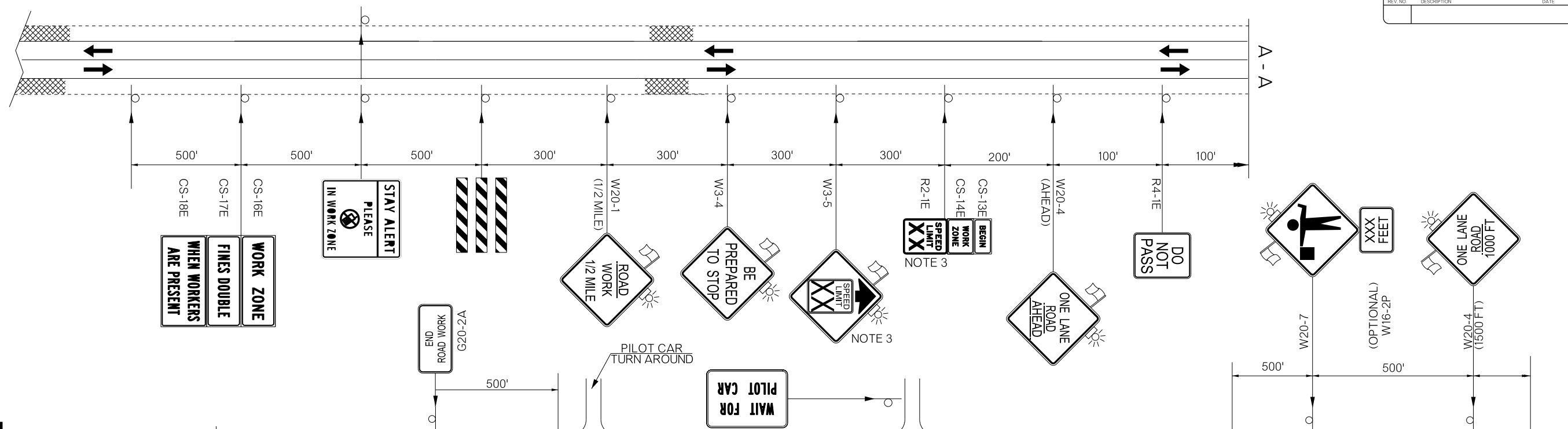
COLOR:
LEGEND, SYMBOL AND BORDER:
BLACK (NON-REFLECTORIZED)
BACKGROUND:
FLUORESCENT ORANGE (REFLECTORIZED)
FLUORESCENT YELLOW (REFLECTORIZED)
WHITE (REFLECTORIZED)
RED (TRANSPARENT)



COLOR:
LEGEND AND BORDER:
BLACK (NON-REFLECTORIZED)
BACKGROUND:
WHITE (REFLECTORIZED)

AADT	LANE CLOSURE LIMIT
<4,000	2 MILES
4,000- 9,000	1 MILE
>9,000	0.5 MILE

- KEY:
- SIGN
 - FLAGGER
 - DRUM
 - SHADOW VEHICLE (NOTE 1)
 - CHANNELIZER CONE
 - TRUCK MOUNTED ATTENUATOR
 - WORK AREA



THERE IS NO SUGGESTED SEQUENCE OF CONSTRUCTION IN THIS DRAWING. LANES SHALL BE WORKED AS STATED IN THE PLANS OR AS DIRECTED BY THE ENGINEER. THE DETAILS SHOWN ARE FOR ONE DIRECTION OF CONSTRUCTION ONLY. ALL TRAFFIC CONTROL FOR THE ALTERNATE DIRECTION WILL BE OPPOSITE OF THAT SHOWN.

PAY ITEMS AND NOTES FOR TRAFFIC CONTROL WILL BE CARRIED ON MANDATORY TIED PROJECT JP33294(04).

NOTE 4
A LONGITUDINAL BUFFER AREA, TO ALLOW WORKERS TIME TO EVACUATE THE WORK AREA, SHOULD BE PROVIDED. FOR GUIDELINES ON SETTING THE LENGTH OF THIS BUFFER, SEE STANDARD DRAWING TCS2-1-(LATEST REVISION). ACTUAL LENGTH SHALL BE DETERMINED BY FIELD CONDITIONS AND THE JUDGEMENT OF THE ENGINEER.

GENERAL NOTES:
THE FLAGGERS SHALL BE IN SIGHT OF EACH OTHER OR IN DIRECT CONTACT AT ALL TIMES AND SHALL BE POSITIONED TO PROTECT THE WORKERS.

WHEN NO WORK IS BEING PERFORMED AND TWO LANE TRAFFIC IS OPERATING, FLAGGERS WILL NOT BE REQUIRED. WHENEVER FLAGGERS ARE NOT PRESENT, THE 'FLAGGER' SIGNS SHALL BE REMOVED OR COVERED.

FLOODLIGHTS SHOULD BE PROVIDED TO MARK FLAGGER STATIONS AT NIGHT AS NEEDED.

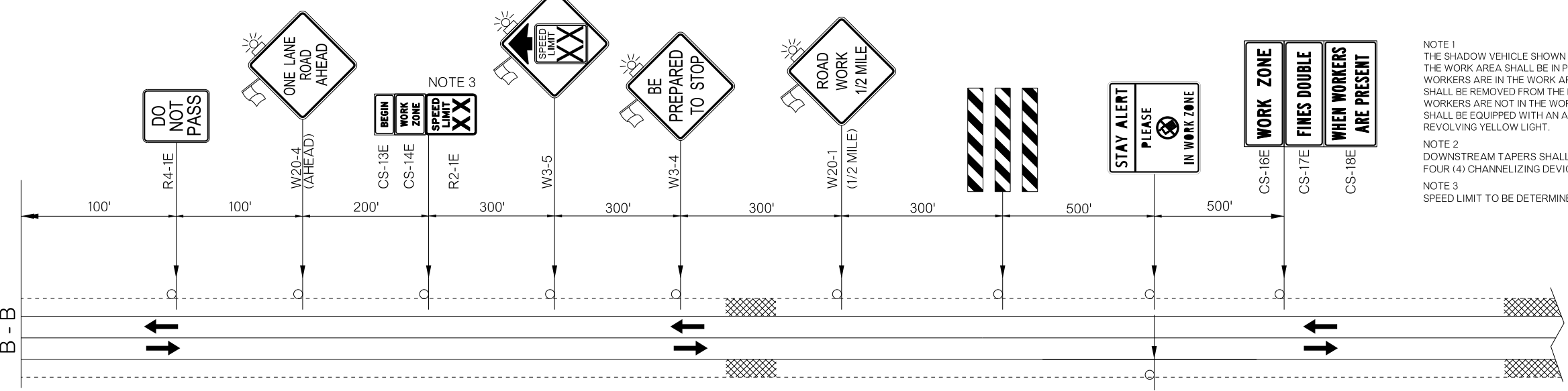
NOTE 5
THE CONTRACTOR SHALL USE THE (TABLE 1) TO DETERMINE THE LENGTH OF LANE CLOSURE DUE TO AADT AS DEEMED AND APPROVED BY THE ENGINEER.

NOTE 1
THE SHADOW VEHICLE SHOWN AT THE BEGINNING OF THE WORK AREA SHALL BE IN PLACE WHENEVER WORKERS ARE IN THE WORK AREA. THIS VEHICLE SHALL BE REMOVED FROM THE ROADWAY WHENEVER WORKERS ARE NOT IN THE WORK AREA. THIS VEHICLE SHALL BE EQUIPPED WITH AN ACTUATED FLASHING OR REVOLVING YELLOW LIGHT.

NOTE 2
DOWNSTREAM TAPERS SHALL CONTAIN A MINIMUM OF FOUR (4) CHANNELIZING DEVICES.

NOTE 3
SPEED LIMIT TO BE DETERMINED BY THE DIVISION ENGINEER.

NOT TO SCALE



DIVISION 1	MULTIPLE COUNTIES	DETAIL:	TMS	7/17
TRAFFIC CONTROL DETAIL		CHECK:	GF	7/17
		ENGINEER:	KCD	7/17
STATE OF OKLAHOMA		DEPARTMENT OF TRANSPORTATION		
JOBPIECE NO. 33293(04)		GROUP: ABRAHAM		SHEET NO. T004